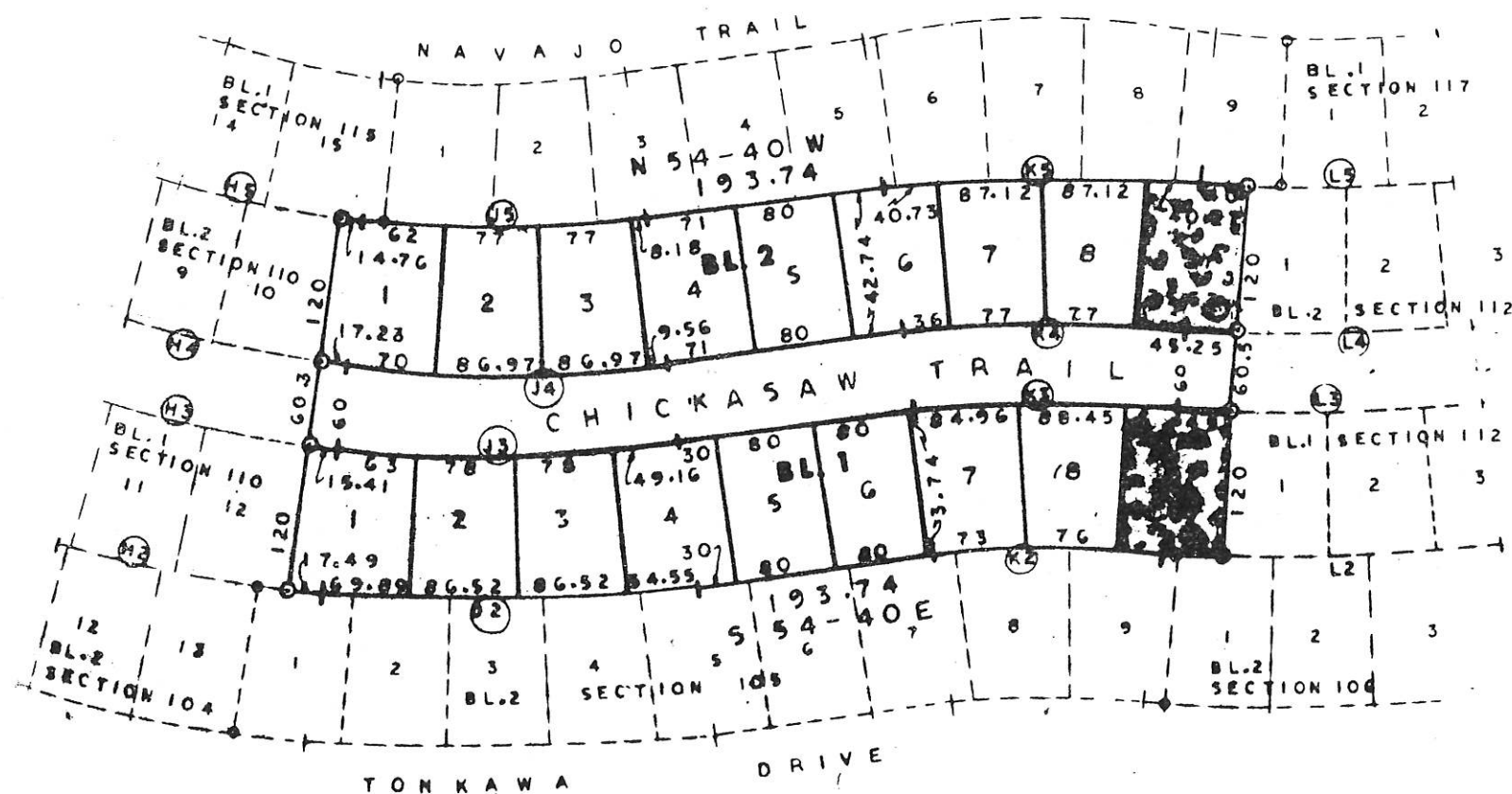


# HILLTOP LAKES RESORT CITY

## SECTION 111

18 LOTS — 5.05 ACRES

J.M. VIESCA GRANT — LEON COUNTY, TEXAS



CURVE DATA

C	Δ	D	R	T	L
H2	11-40	5.66776	1010.98	103.28	205.84
H3	}	6.43112	890.98	91.02	181.41
H4		6.89647	830.98	84.89	169.19
H5		8.05929	710.98	72.63	144.76
J2	14-00	4.70617	1217.55	149.85	297.48
J3	}	5.22071	1097.55	134.75	268.16
J4		5.52262	1037.55	127.38	253.50
J5		6.24489	917.55	112.65	224.18
K2	14-10	7.82370	732.39	91.00	181.07
K3	}	6.72227	852.39	105.91	210.74
K4		6.28020	912.39	113.37	225.52
K5		5.55022	1032.39	128.38	255.24
L2	13-05	4.72199	1213.47	139.15	277.07
L3	}	5.24019	1093.47	126.40	249.67
L4		5.54442	1033.47	118.51	235.97
L5		6.27278	913.47	104.75	208.57

### UTILITY EASEMENTS

3' ON THE FRONT OF ALL LOTS  
 10' ON THE REAR " " "  
 OTHER AS SHOWN ON PLAT

### BUILDING LINES

25' ON THE FRONT OF ALL LOTS  
 20' " " REAR " " "  
 5' " " SIDE (between) OF ALL LOTS



E.E. JOHNSON & ASSOCIATES  
 ENGINEERS

Caldwell Texas